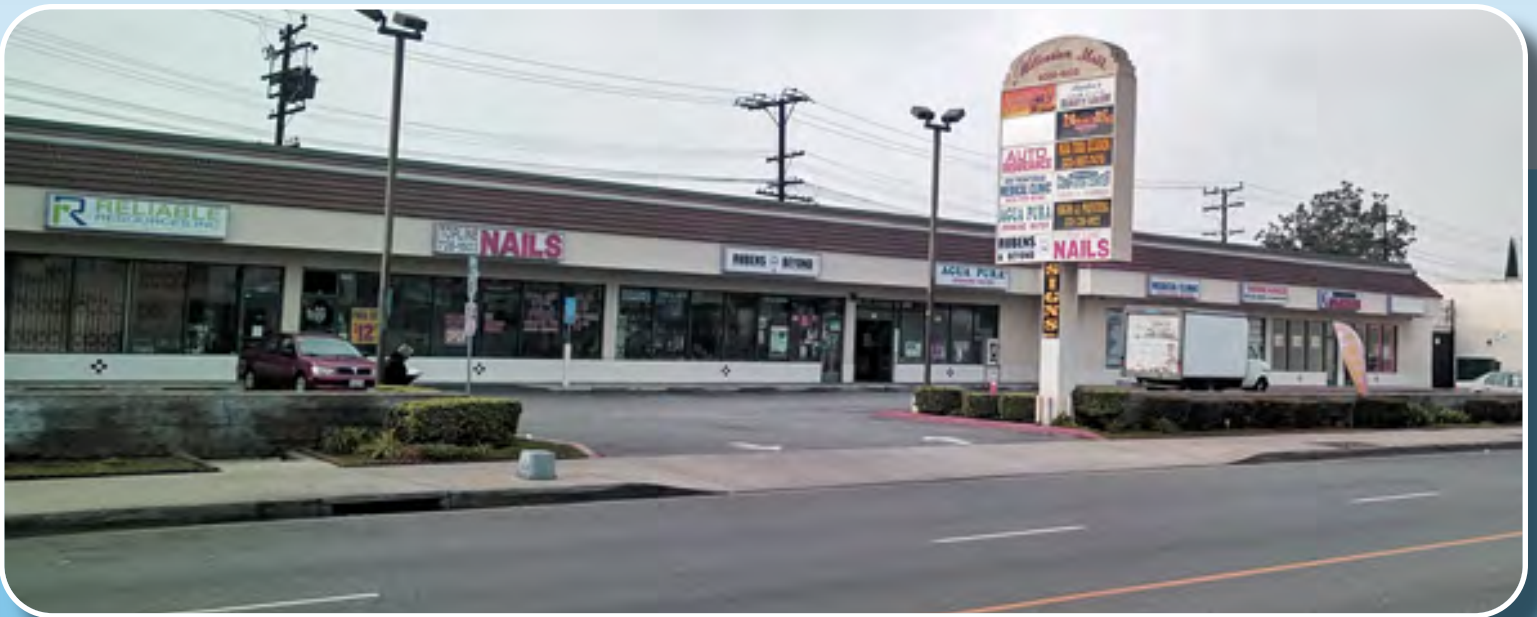


FOR LEASE

The Legaspi Company
Marketing/Realty Services

WHITTIER BLVD RETAIL CORRIDOR - EAST L.A.

6002 WHITTIER BOULEVARD, LOS ANGELES, CA 90022



± 725 SQ FT IN-LINE SHOP SPACE - AVAILABLE -

PROPERTY HIGHLIGHTS

- Shopping Center Parking Lot
- Pole Signage
- Full Turning Accessibility to Shopping Center
- High Vehicular and Pedestrian Traffic

CONTACT: STEPHEN LEGASPI (323) 728-8455 *208 STEPHEN@THELEGASPI.COM

License No. 01296476

2017 ESTIMATE*	1 MILE	3 MILES	5 MILES
Population	38,381	220,713	757,157
Hispanic %	95.26%	83.29%	78.64%
Households	10,239	61,166	204,721
Median Income	\$43,401	\$46,056	\$46,022
Median Age	32.9	34.2	34.3

*Source: Nielsen



/THELEGASPICO

Information contained herein has been gathered from multiple third party sources that we deem reliable. The Legaspi Company does not represent this information to be true or accurate and should be confirmed by any party involved in any transaction concerning the property or the information stated herein.